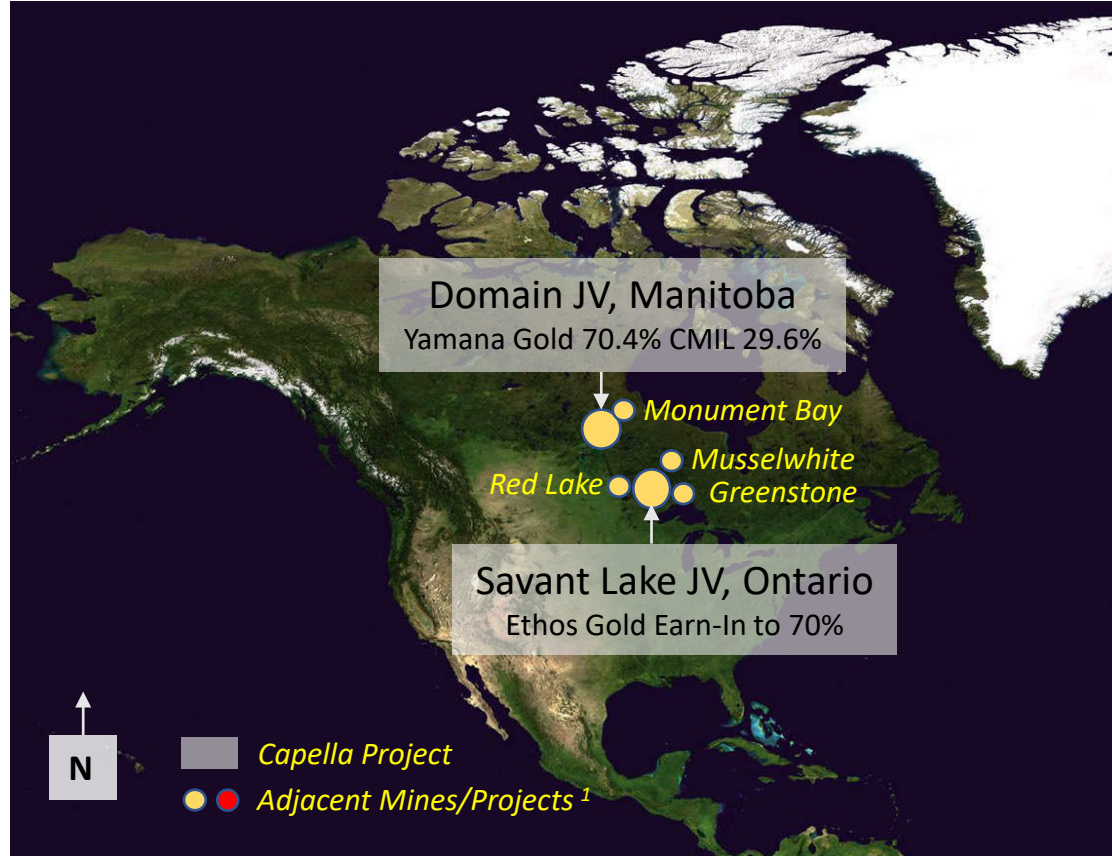


Figure 1. Capella's High-Grade Gold & Copper Portfolio

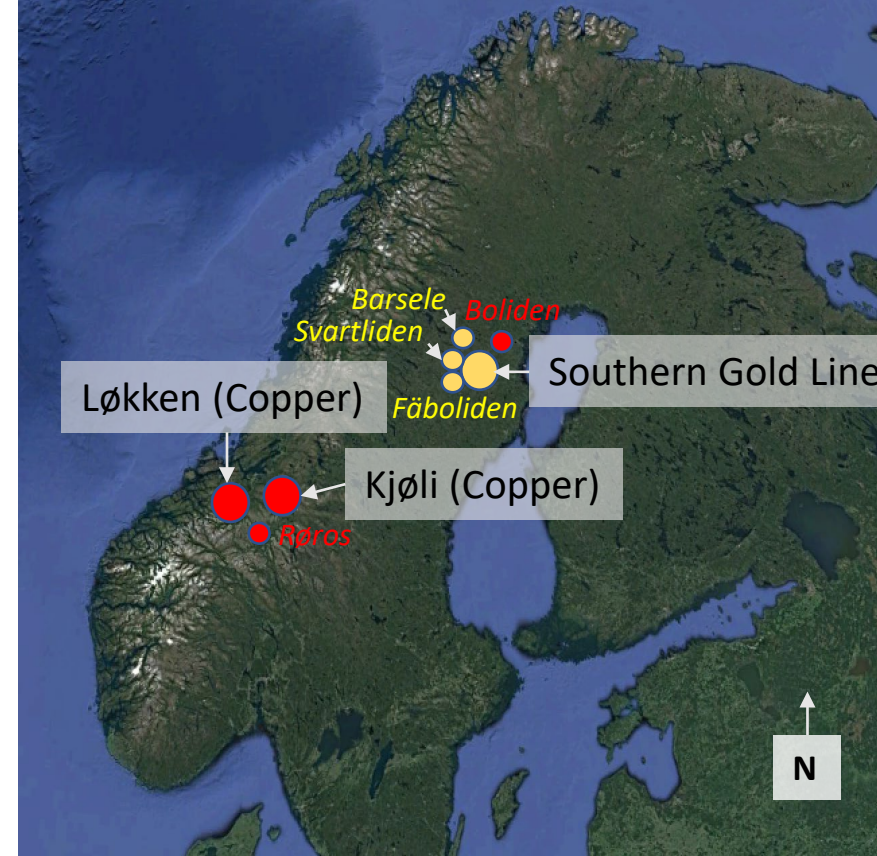
Favourable Jurisdictions, Management with Track Record of Success



Our Canadian Gold Joint Ventures



Our 100%-owned Scandinavian Projects



Argentina

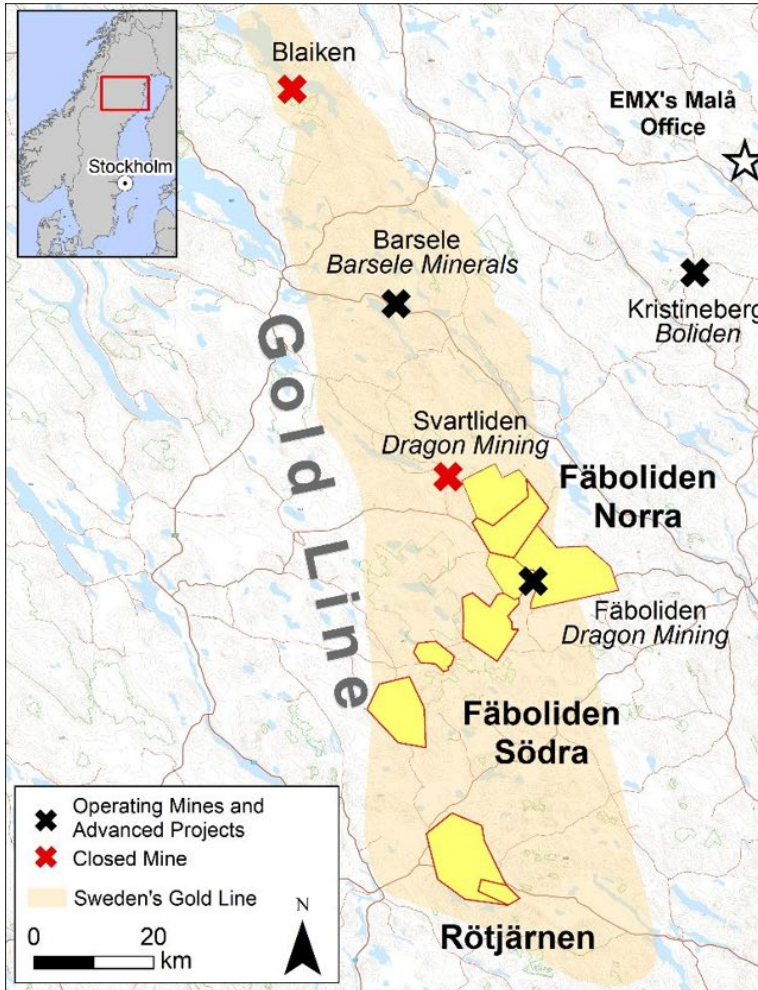
- Residual interest in Sierra Blanca gold-silver divestiture (Austral Gold JV)
- Shareholding in Cerrado Gold Inc (TSX.V:CERT) from Las Calandrias divestiture

TSX.V : CMIL
FRA : N7D2

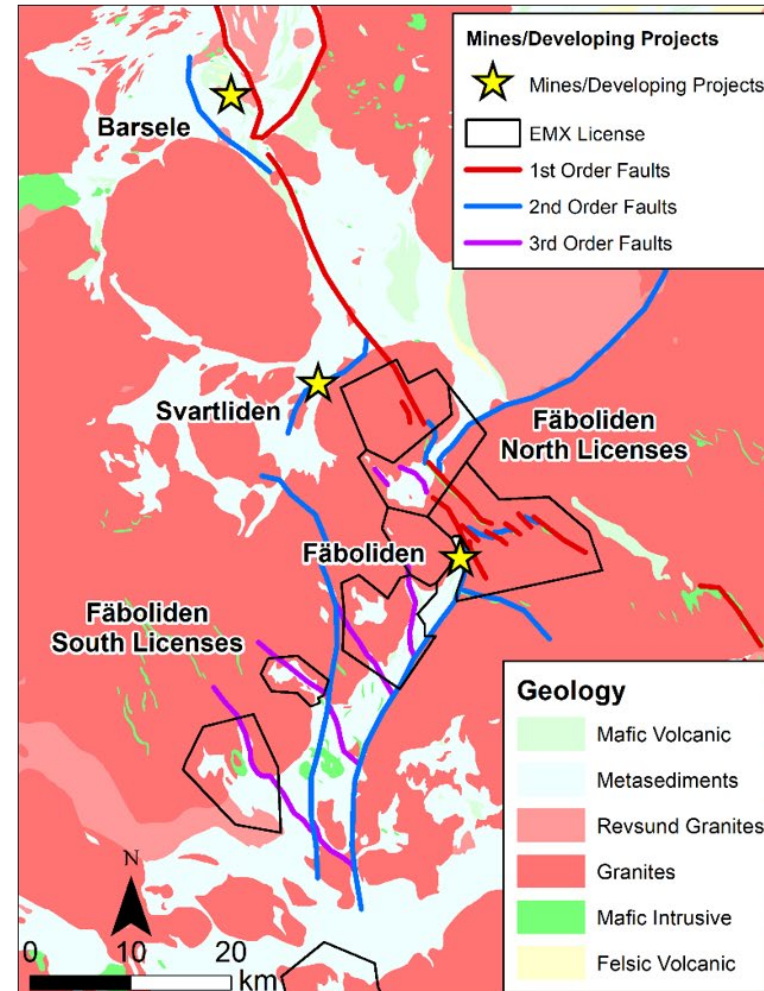
¹ Mineralization hosted on adjacent mines/projects is not necessarily indicative of mineralization that may be hosted on the Company's projects.

Figure 2. Southern Gold Line Project, Sweden

Targeting Orogenic Gold Deposits at Granite-Greenstone contacts



Claim Map and Regional Setting



Regional Geology and Targeting

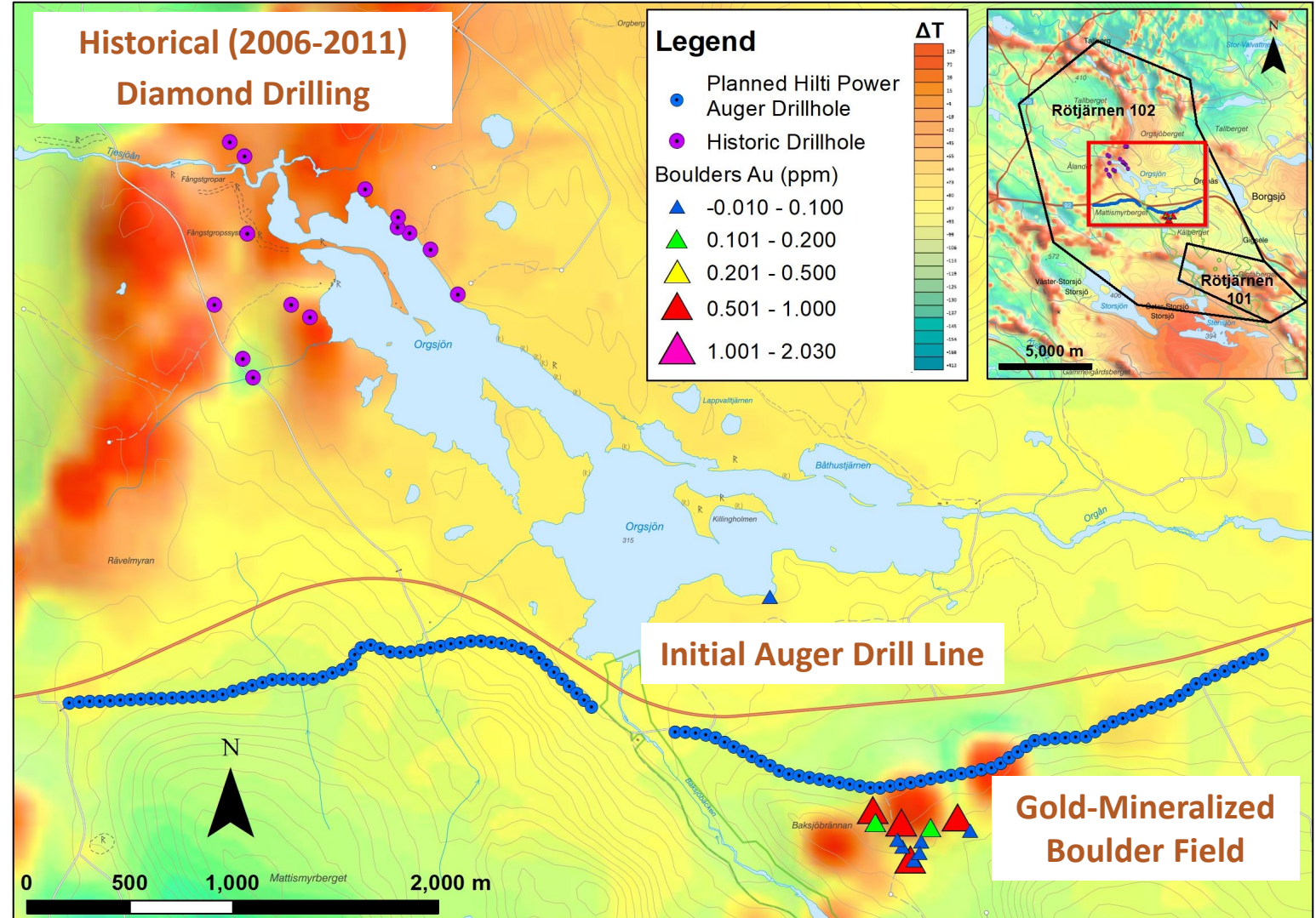
- District-scale, 500 square km property package
- Gold targets in belt with known Au deposits – Barsele (Agnico/Barsele), Svartliden & Fäboliden (Dragon Mining)²
- Primary focus is on structurally-controlled gold deposits at or near granite-greenstone contacts
- Gold-mineralized boulder fields identified on surface at Rötjärnen
- Auger drilling during Q1/Q2 2021 to seek potential sources of gold-mineralized boulders
- Preparation for early-Spring field program to include high-resolution magnetic survey and BLEG geochemical sampling

² Mineralization hosted on adjacent mines/projects is not necessarily indicative of mineralization that may be hosted on the Company's projects.

Figure 3. Auger Drill Program at Rötjärnen Targeting High-Grade Gold Deposits



Boulder Field over Till, Rötjärnen



Initial Auger Drill Line, Rötjärnen